


CENTRAL VALLEY LANDSCAPE CONSERVATION PROJECT

Implementation Planning

February 26-27

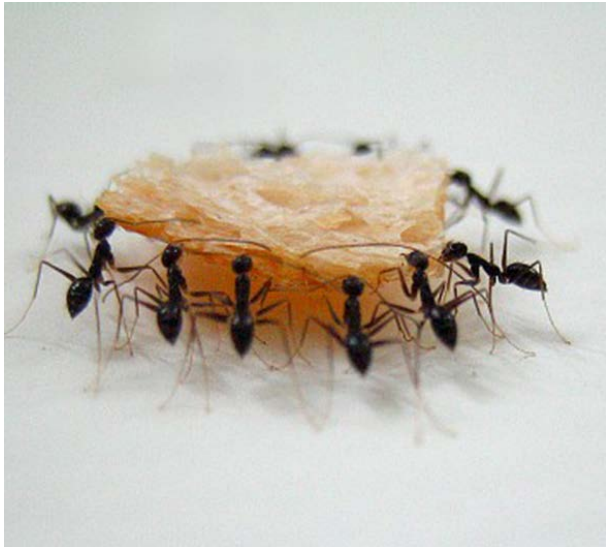




Goal: to identify **climate-smart conservation actions** that will **maximize the adaptive capacity** of priority species, habitats, and ecosystems to support an ecologically connected Central Valley landscape.

The background features a map of California with a legend on the left and a scale bar at the bottom. The legend includes symbols for various geographical features and land protection categories. The scale bar shows distances from 0 to 100 miles. A north arrow is also present.

Align existing conservation efforts of:



- National Wildlife Refuges
- Central Valley Joint Venture
- State Wildlife Action Plan
- Dept. of Water Resources
- Fish Habitat Partnerships
- Ag agencies and communities
- **Growing number of conservation programs**



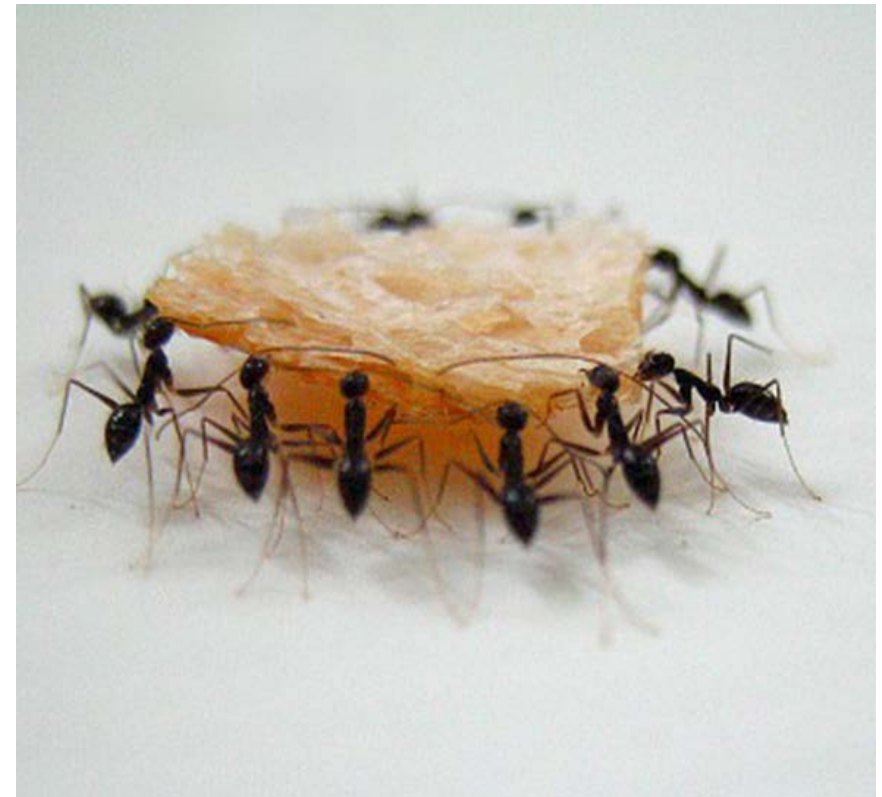
180+
individuals



33+
organizations



Climate-Smart Conservation



Collaborative Conservation

The Central Valley Landscape Conservation Project: Accomplishments

- ✓ **Shared goal, objectives and Priority Natural Resources**
- ✓ **Future scenarios for the Central Valley**
- ✓ **Vulnerability assessments** for priority natural resources
- ✓ **A menu of potential adaptation strategies and actions**
- ✓ **A set of high priority actions**





California Landscape Conservation Cooperative

Climate Commons

[Home](#)

[Central Valley Landscape Conservation](#)

[Datasets](#)

[Documents](#)

[Web Resources](#)

[CA LCC Projects](#)

[Get Started](#)

[Contact Us](#)

Central Valley Landscape Conservation Project



A collective vision for an ecologically-connected California Central Valley.

About the Project

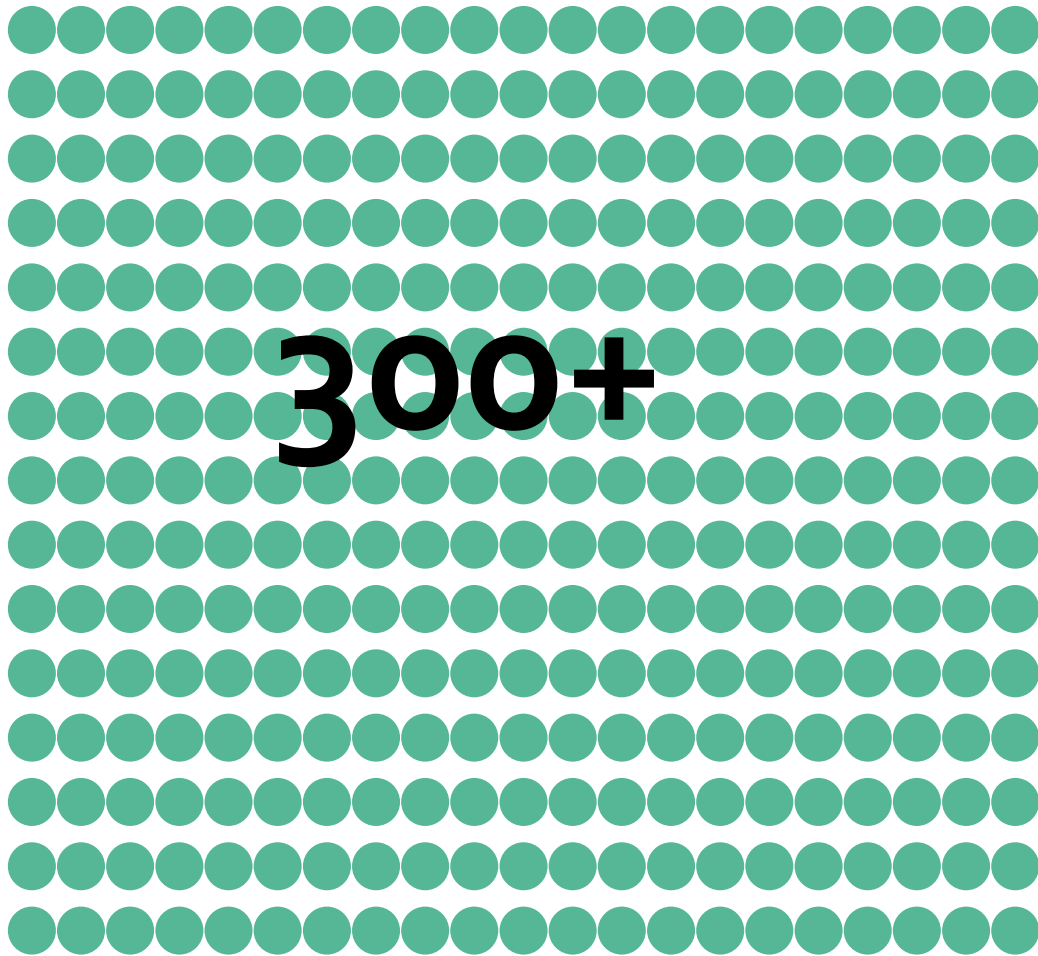
- [About LCDs](#)
- [Goals and Outcomes](#)
- [Workshops](#)
- [Partners and Teams](#)
- [Existing Central Valley Conservation Efforts](#)

Products

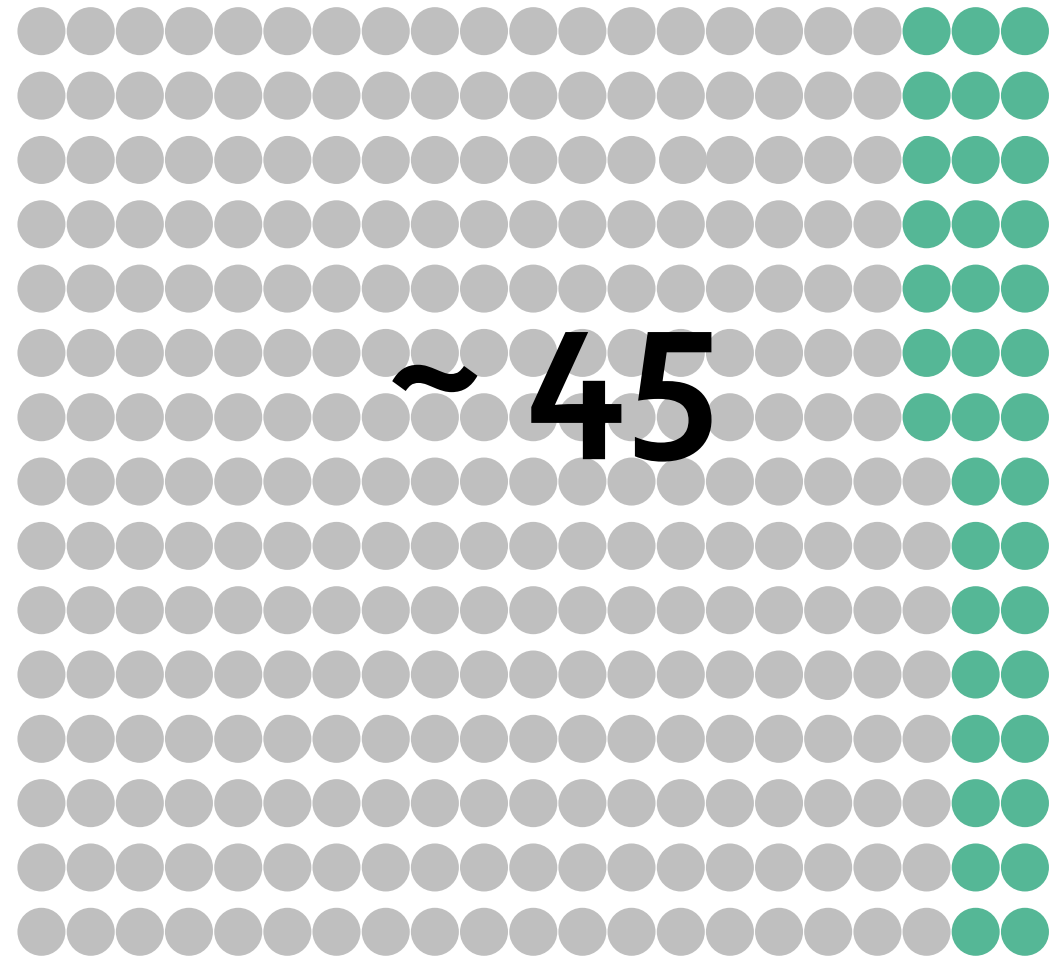
- [Projected Change in California's Central Valley](#)
- [Central Valley Future Scenarios](#)
- [Priority Natural Resources](#)
- [Vulnerability Assessments](#)
- [Conservation Science Library | Map Gallery](#)



Identify Adaptation Strategies & Actions

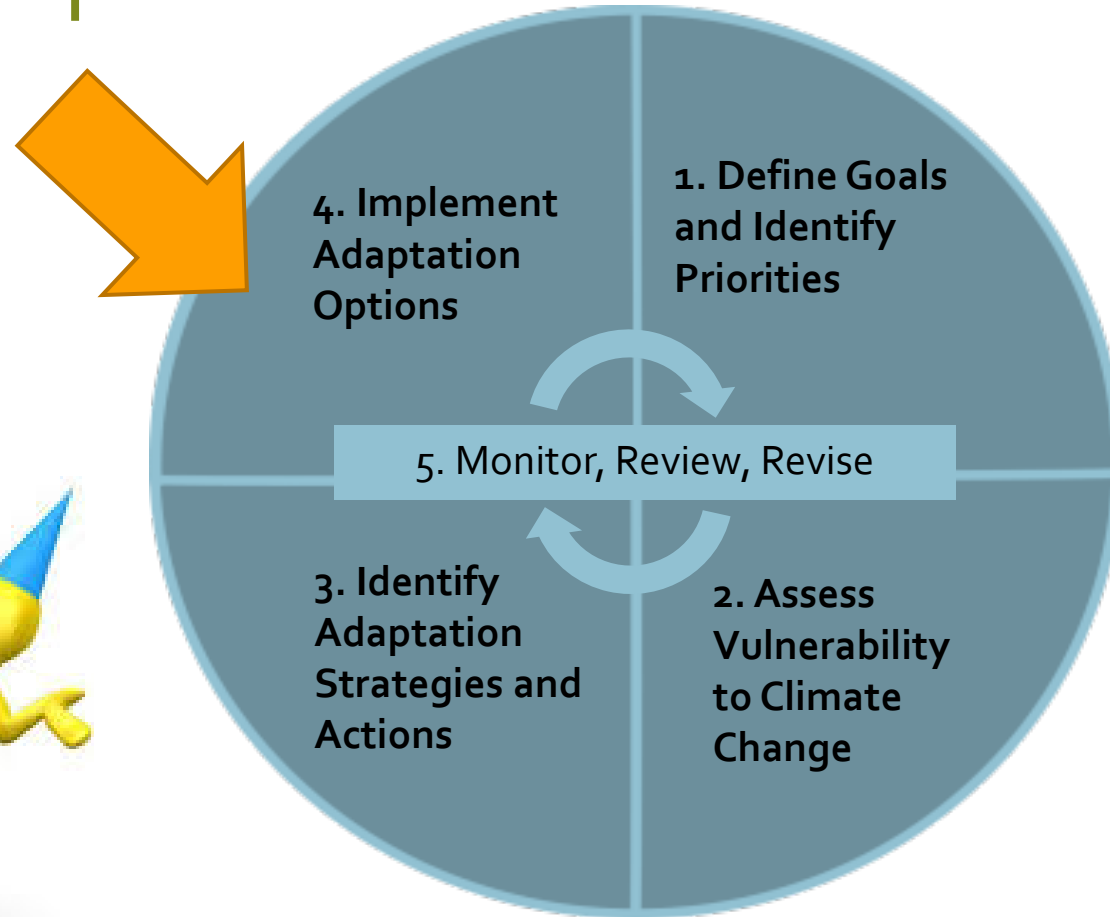


300+



~ 45

The Central Valley Landscape Conservation Project: Accomplishments

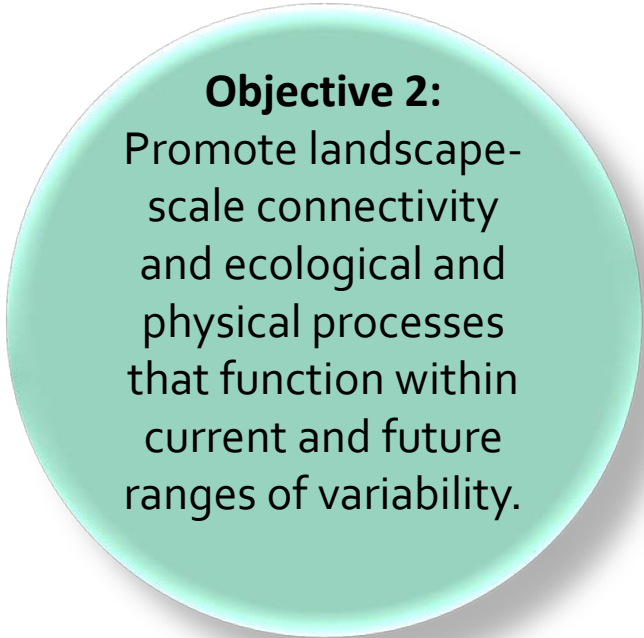
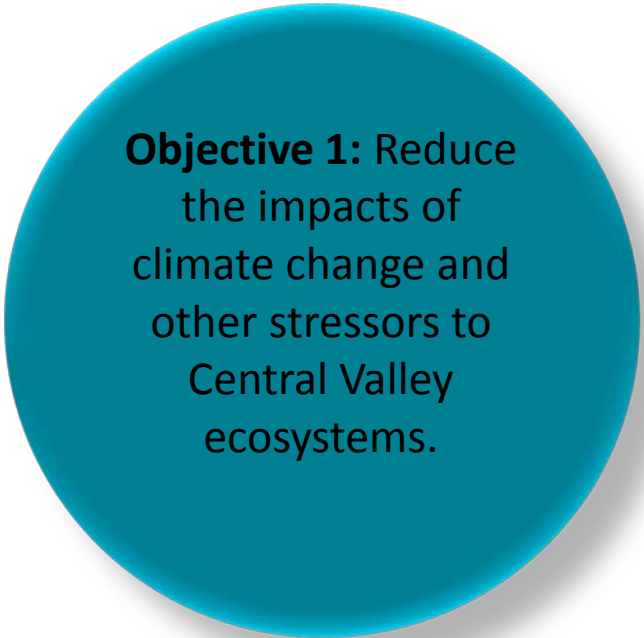


Goals & Objectives

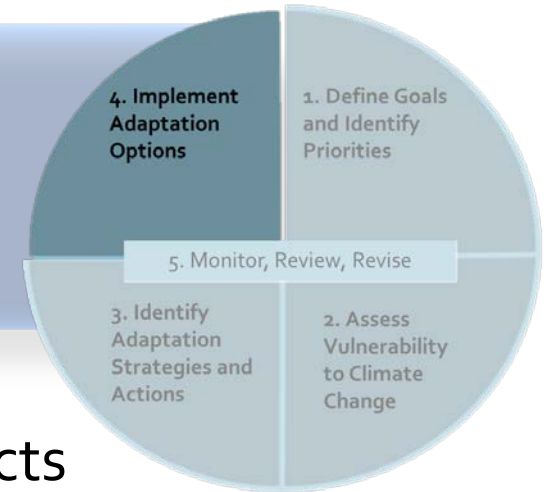


Managing for Change

Connected Lands & Water



Working Group A: Managing for Change

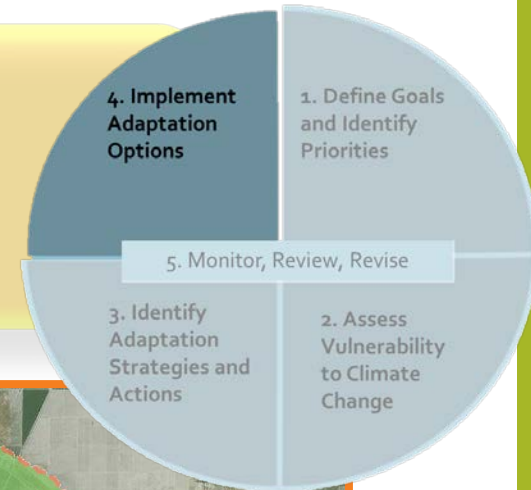


Purpose: To facilitate implementation of climate adaptation projects

This working group will identify climate smart conservation projects that can be implemented in the near term by partners of the CVLCP.

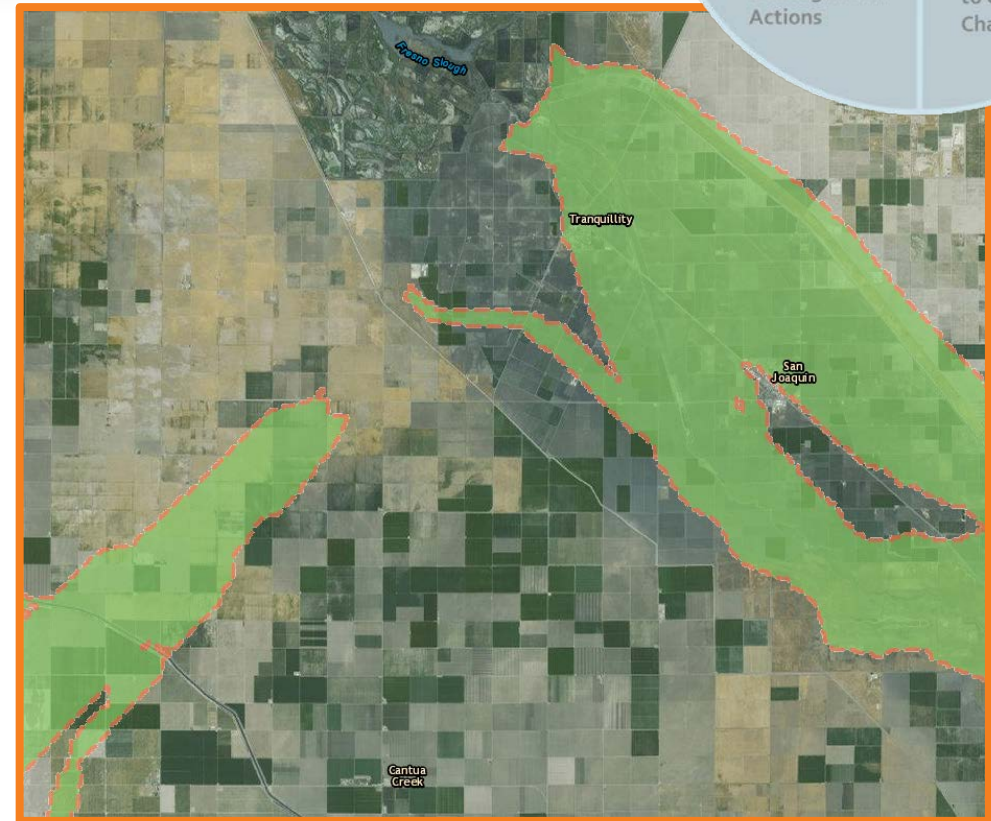


Working Group B: Connected Lands & Waters



Purpose: To spatially prioritize places where collaborative conservation and climate-smart actions will be most effective and efficient in enhancing ecosystem functions in the Central Valley

This working group will identify priority areas for conservation that enhance ecosystem processes and the adaptive capacity of the 35 priority natural resources.



Anticipated Work-Flow:

Year 1						
Activity:	Workshop	Regular meetings	Joint Meeting	Regular meetings	Workshop	
Managing for Change WG						
Connected Lands & Water WG	Joint		Status Update		Joint	
Leadership Team						

February Meeting Objectives

- To discuss the next phase of the Central Valley Landscape Conservation Project
- Review and finalize the purpose and tasks for working groups that address each objective
- Identify working group members and develop initial work plans for each working group

Define Goals and Identify Priorities

Goal: to identify climate-smart conservation actions in partnership with scientists and natural resource managers that will maximize the adaptive capacity of priority species, habitats, and ecosystems to support an ecologically connected Central Valley landscape.



Objective 1: Reduce the impacts of climate change and other stressors to Central Valley ecosystems.

Objective 2: Promote landscape-scale connectivity and ecological and physical processes that function within current and future ranges of variability.

Objective 3: Conserve resilient and adaptable ecosystems that sustain future Central Valley biodiversity.

Define Goals and Identify Priorities



Priority Natural Resources

Habitats	Species Groups	Species
Chaparral & Serpentine Shrublands	Amphibians	Blunt-nosed Leopard Lizard
Dunes	Breeding Waterbirds & Shorebirds	California Tiger Salamander
Flooded Croplands	Burrowing Mammals	Green Sturgeon
Grasslands	Cavity Nesters & Roosters	Pacific Lamprey
Oak Woodlands	Dragonflies & Damselflies	California Red-legged Frog
Permanent Wetlands	Large Wide-ranging Mammals	Tricolored Blackbird
Rice Croplands	Riparian Birds	Valley Oak
Riparian Vegetation/Natural Riverbank	Salmonids	Yellow-legged Frog
San Joaquin Desert	Vernal Pool Crustaceans	Yellow-billed Magpie
Seasonal Wetlands	Bumblebees & Other Insect Pollinators	
Stream Channel	Wetland-dependent Mammals	
Vernal Pools & Swales	Wetland-dependent Reptiles	
	Wetland-obligate Plants	
	Wintering Waterbirds & Shorebirds	

Assess Vulnerability to Climate Change

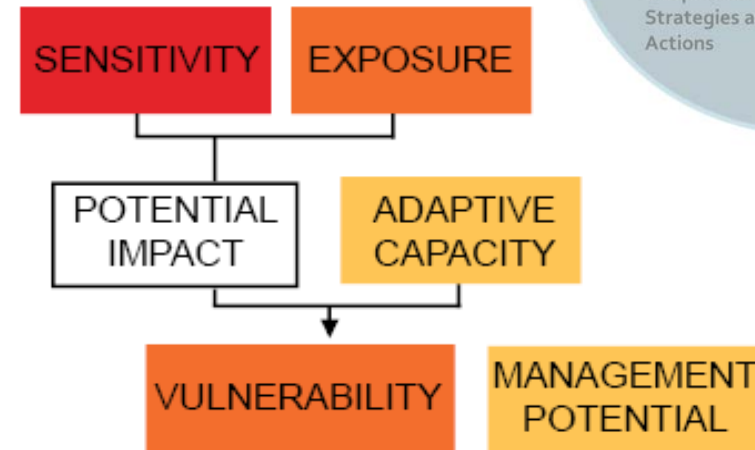


Vernal Pools & Swales

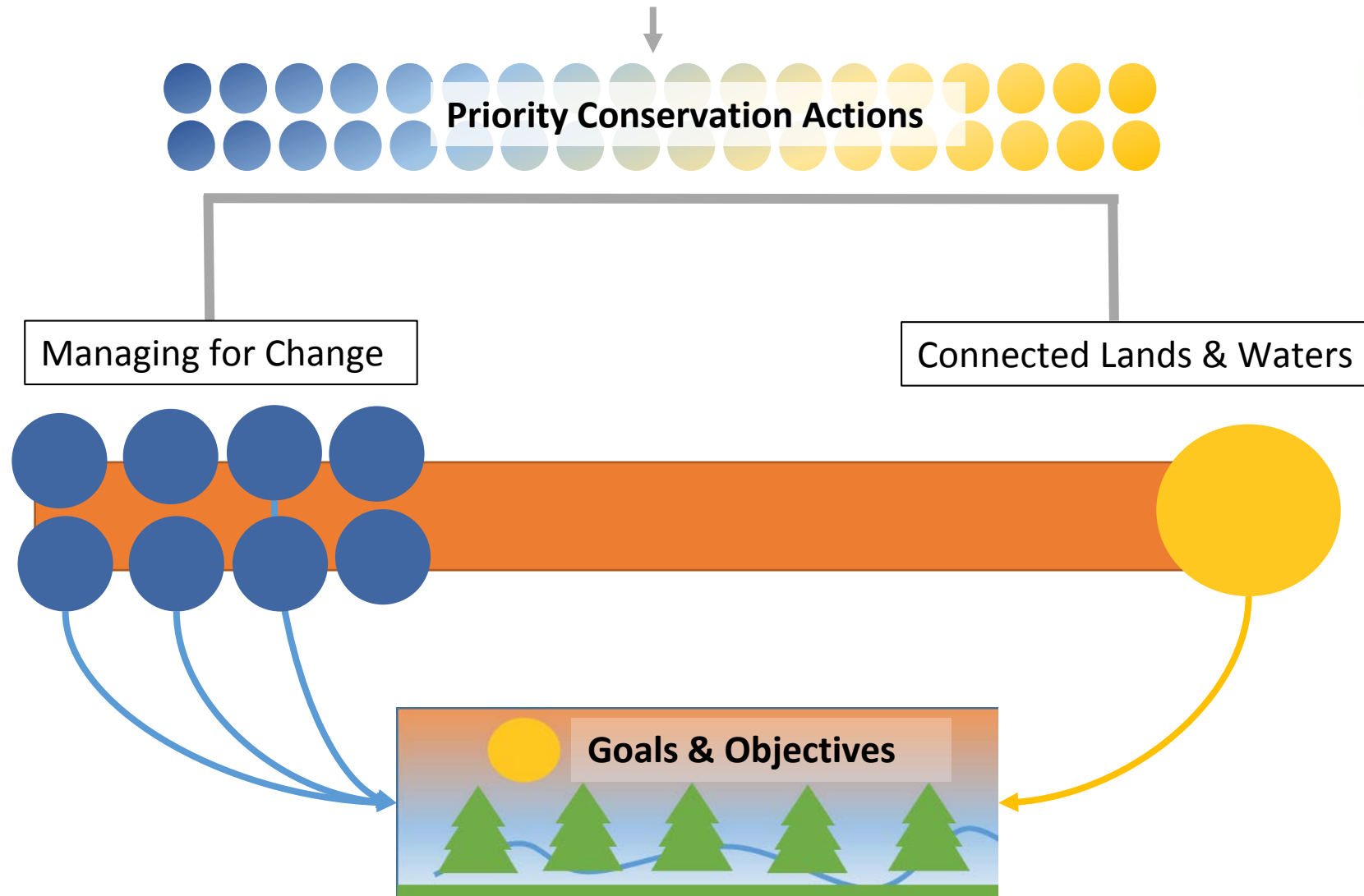


Vernal pools and swales are ephemeral wetlands that form in landscape depressions where soil characteristics limit water infiltration. Vernal pools are characterized by a wet period in winter, drying during spring, and complete desiccation during late spring and summer.

Swales connect or feed vernal pools, but typically experience less extensive inundation. This unique habitat is home to highly specialized plants, animals, and insects, many of them endemic to the region and listed as threatened or endangered.



Goals & Objectives



The End

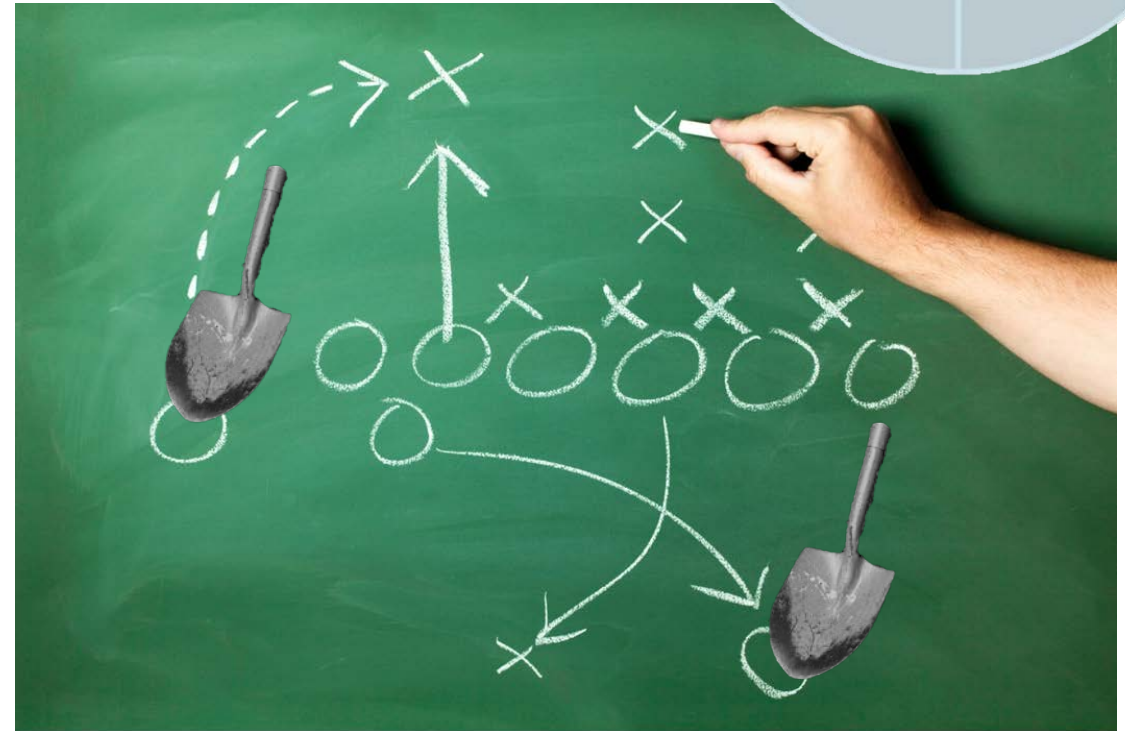




Phase II



Use and expand on the information developed by the other working groups in order to advance Objective 3 “Conserve resilient and adaptable ecosystems that sustain future Central Valley biodiversity”.



Webinar Outline

- Background on the Central Valley Landscape Conservation Project
- What we have accomplished so far
- February Workshop
- Feedback from you!

Why?

