

Landscape Conservation Design

Central Valley Landscape Conservation Project

26-27 February 2018

Definition

Landscape conservation design is a partner-driven approach to achieve a sustainable, resilient socio-ecological landscape. It is an iterative, collaborative, and holistic process resulting in strategic and spatial products that provide information, analytical tools, maps, and strategies to achieve landscape goals collectively held among partners.



Landscape Conservation Cooperative Network

Eight key characteristics

- Collaborative / Multi-sector / Partner-Driven:
- Shared Goals
- Holistic / System Level
- Conservation Features
- Desired Future Conditions
- Assessment / Situation Analysis
- Strategies
- Iterative / Adaptive



Eight key characteristics

- Collaborative / Multi-sector / Partner-Driven:
- Shared Goals
- Holistic / System Level
- Conservation Features
 - Conservation features are the most valued and/or urgent elements around which the Design is constructed. Identifying conservation features allows partners to link goals to specific factors driving change.



Eight key characteristics

- Desired Future Conditions
- Assessment / Situation Analysis
 - The Design includes an assessment of current and projected future conditions of the landscape, of the factors driving change (e.g., climate change, land use, etc.), and of the economic, social, and/or ecological trends and opportunities affecting shared goals and desired future conditions within the landscape.
- Strategies
- Iterative / Adaptive

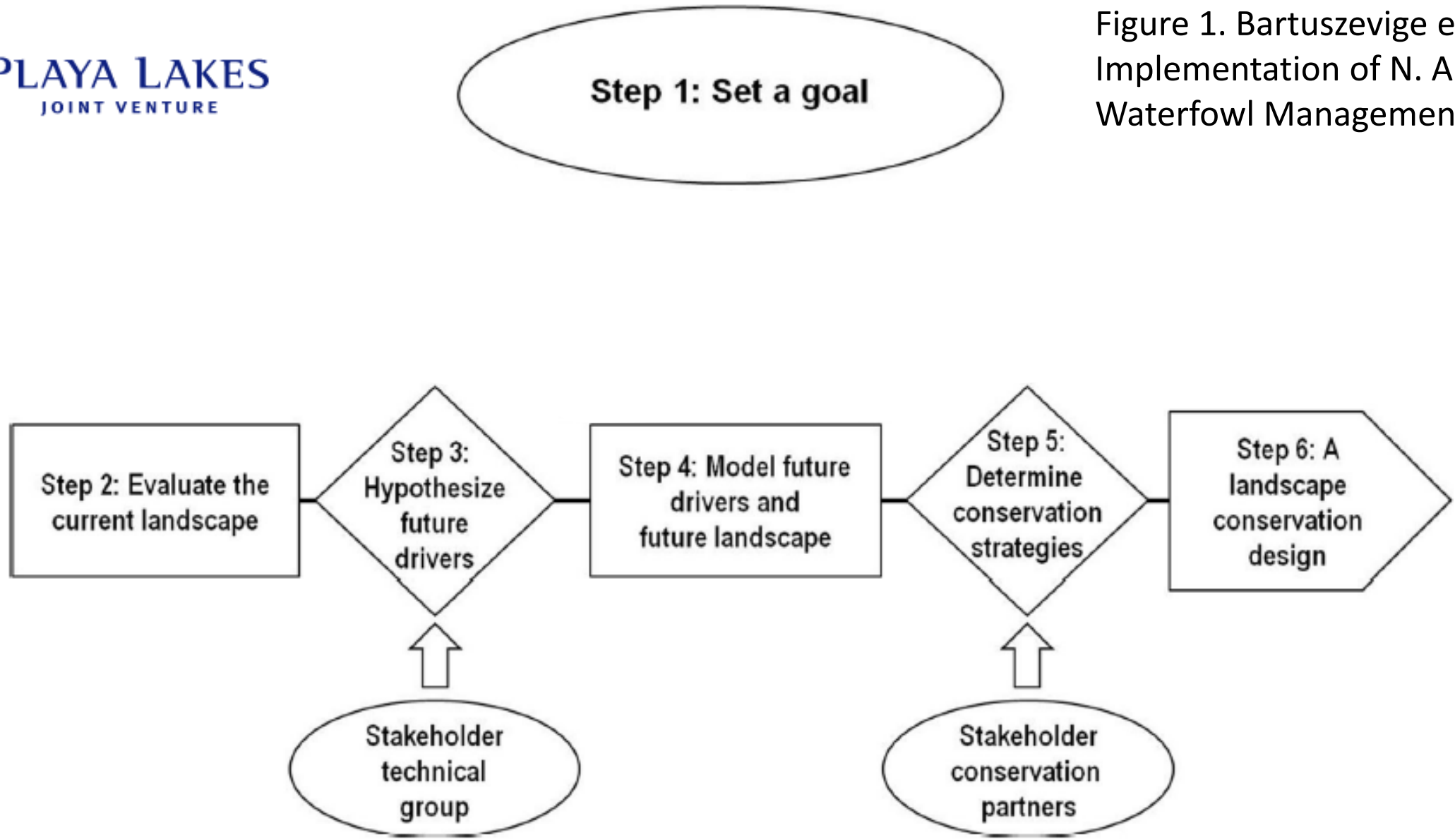


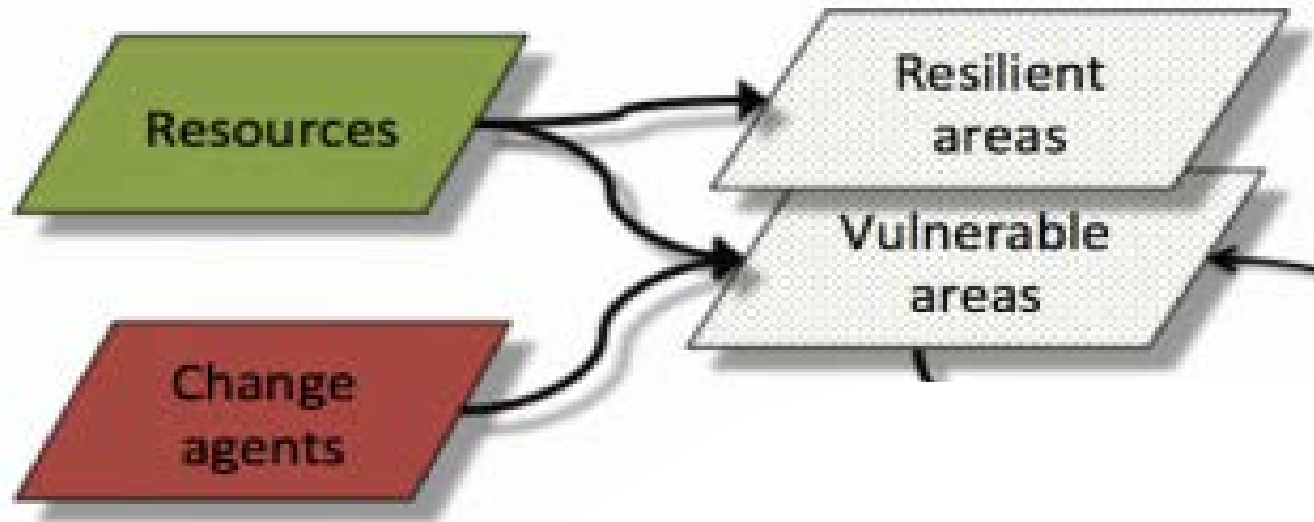
Eight key characteristics

- Strategies (Actions)
 - The partnership collaboratively provides recommendations on strategies to achieve the vision, goals, and objectives of the Design.
- Iterative / Adaptive
 - The Design products and processes are developed and managed iteratively, incorporate uncertainty, are adaptive to events and responsive to change, and are periodically evaluated and refined.



Figure 1. Bartuszevige et al. 2016
Implementation of N. Amer.
Waterfowl Management Plan





Great Basin Landscape Conservation Cooperative



Green River Basin Landscape
Conservation Design

North Atlantic Landscape Conservation Cooperative



UMassAmherst
The Commonwealth's Flagship Campus

Connecticut River
Watershed Landscape
Conservation Design

The **purpose** of the Designing Sustainable Landscapes (DSL) project is to:

Assess the capability of current and potential future landscapes to provide integral ecosystems and suitable habitat for a suite of representative species, and provide guidance for strategic habitat conservation

Landscape

- **Change** urban growth
climate
- **Assessment** ecosystems
species
- **Design**

Our proposed process...



- Step 1: Identify user needs and decision context
 - Key threats to consider
 - Prioritize or group conservation targets
- Step 2: Daylight existing spatial data and tools
- Step 3: Develop criteria for identifying priority areas
 - Enhance connectivity and adaptive capacity
- Step 4: Develop spatial prioritization products

